

# Continental<sup>®</sup> BATTERIES

DATA SHEET

75-CP

PART # 75-CP  
BCI 75T  
VOLTAGE 12V  
Ah 54



## PHYSICAL SPECIFICATIONS

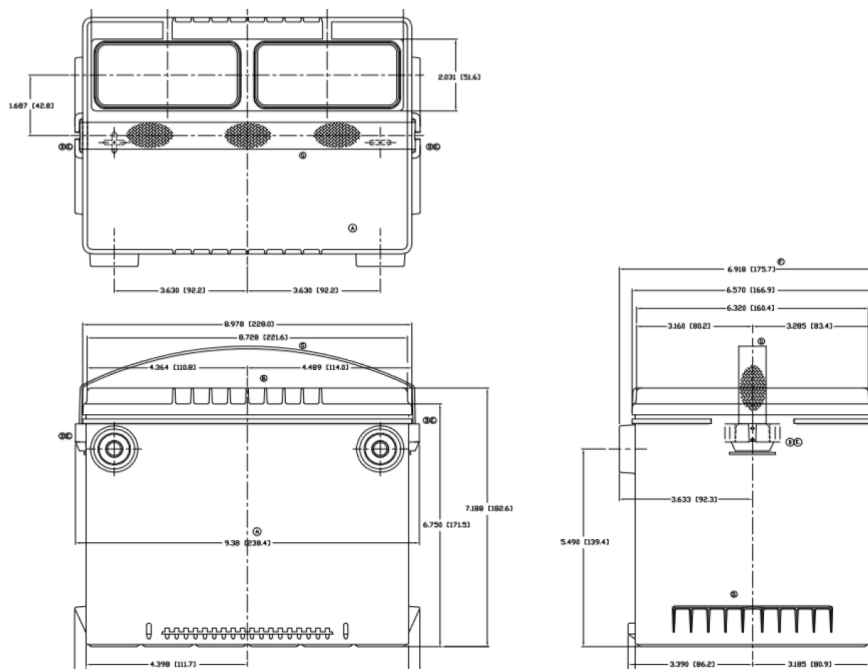
Battery Type	Weight	Dimensions (L x W x H)	Container Material	Cover Material	Separator Material	Handle Option
Flooded	34.34 lbs 15.6 kgs	9.4 x 6.92 x 7.19" 238.8 x 175.8 x 182.6 mm	Polypropylene	Polypropylene	Polyethylene	Yes

## ELECTRICAL SPECIFICATIONS

Nominal Voltage	SAE CCA (-18°C/0°F)	SAE CA (0°C/32°F)	SAE RC (27°C/80°F)	Ref. Ah Capacity 20 Hr	Battery Terminal Type	Electrolyte Specific Gravity Range
12.6 V	700 A	875 A	95 Min	54 Ah	Side Terminal Type S	1.270-1.300

## MISC SPECIFICATIONS

Maximum Discharge Current	1000 A (5 sec)
Positive Grid Alloy	Lead Calcium Tin
Negative Grid Alloy	Lead Calcium
Terminal Polarity	+ -



WWW.GOCBS.COM

