

Continental[®]

BATTERIES

DATA SHEET

31A-HD

PART # 31A-HD
 BCI 31A
 VOLTAGE 12V
 Ah 100



PHYSICAL SPECIFICATIONS

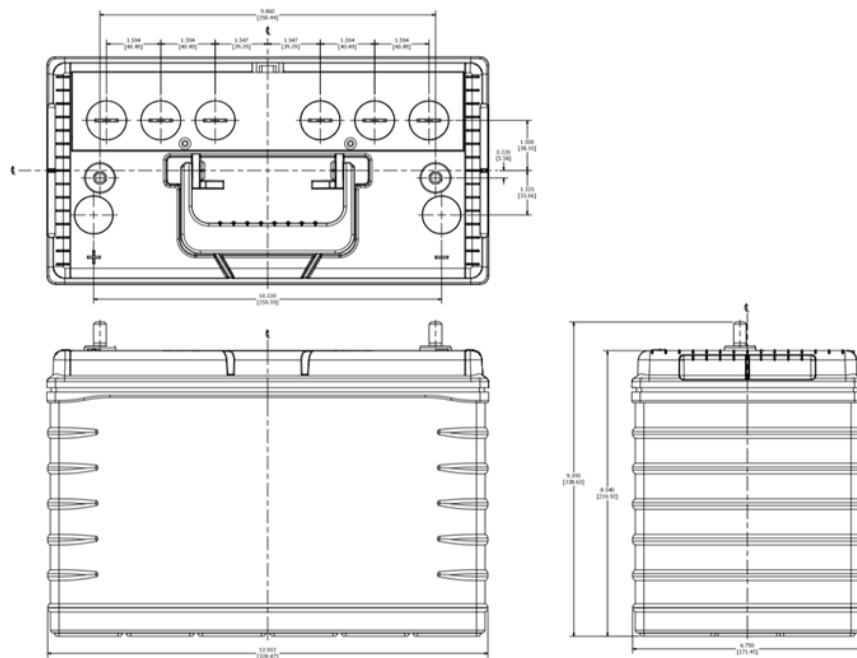
Battery Type	Weight	Dimensions (L x W x H)	Container Material	Cover Material	Separator Material	Handle Option
Flooded	53.3 lbs 24.2 kgs	12.93 x 6.75 x 9.4" 328.5 x 171.4 x 238.8 mm	Polypropylene	Polypropylene	Polyethylene	Yes

ELECTRICAL SPECIFICATIONS

Nominal Voltage	SAE CCA (-18°C/0°F)	SAE CA (0°C/32°F)	SAE RC (27°C/80°F)	Ref. Ah Capacity 20 Hr	Battery Terminal Type	Electrolyte Specific Gravity Range
12.6 V	750 A	900 A	165 Min	100 Ah	Top Post SAE Type A	1.270-1.300

MISC SPECIFICATIONS

Maximum Discharge Current	1000 A (5 sec)
Positive Grid Alloy	Lead Calcium Tin
Negative Grid Alloy	Lead Calcium
Terminal Polarity	+ -



WWW.GOCBS.COM

